

Having the advantages of the approved and reliable gravimetric compounding, using **Gravi-Mix** is a good alternative to avoid providing each machine with a gravimetric dosing station (GDS).

## Benefits

- gravimetric compounding with steady accuracy
- compact device, easy to transport to different destinations
- permanent survey of produced amount in the display
- presetting of total amount with count-down (comfort)
- receipt storage for periodic recurrent receipts (comfort)
- computation and display of mix density (comfort)
- different dimensions and models for different material output rates



The mixer consists in the basic model from supply hoppers for four components and a below placed balance where the compounding is done. One of the components is given to the balance, the other up to four components added from dosing units with valves or, for high output rates, with screws in high precision. The mixed material is then dropped into a supply bin, where an intake tube may be connected directly.

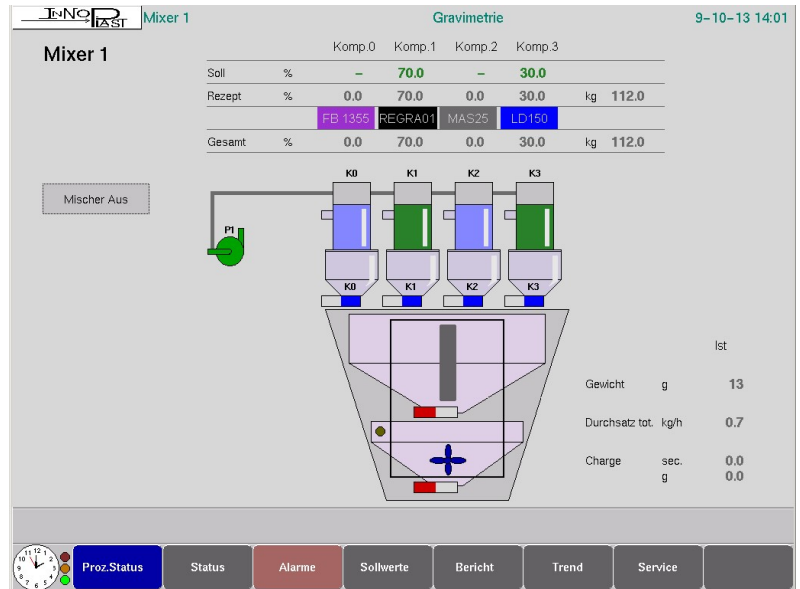
The production throughput ranges from 65 kg/h up to 1700 kg/h total. The percentages of the additional components depend on the specification and materials' bulk density.

The material supply can be done manually or with applied suction feeders.

With the comfort model, additional features are installed like recipe storage, countdown display of remaining amount, computation and display of mixed density, network connection and a distinct report system documenting the produced amount. Furthermore, lower hopper sensors are mounted allowing to detect the material amount needed from the taking machine. The composition of the mixture is regulated automatically by the consumed material until a preset total amount of material is reached.

## Equipment supplied

- Gravi-Mix mixer, consisting of 4 reservoirs with sliders, weighing hoppers (max 500 kg/h throughput) with weighing cells and material sliders, mixing chambers, output valves and mixture containers.
- Control basic model: preset percentages, mixing
- Comfort model: recipe storage, amount countdown, computation and display of mixed density, report system
- Connection to webMIP is possible



Dosing throughput depends on density and granularity of used material.

Complete program of suction feeders on request.

## Technical data

Precision of weighing cell	0,1 %
Power supply motors	230 V AC / 47-53 Hz
Power supply control modules	24 V DC / 2 A
Air supply pneumatic	4 - 6 bar

**What can we do for you? Get in touch today!**

Inno-Plast GmbH  
Mertensstr. 127-131  
D-13587 Berlin

Tel. +49(30)3675 9580  
Fax. +49(30)3675 9589  
<http://www.inno-plast.de>  
info@inno-plast.de

