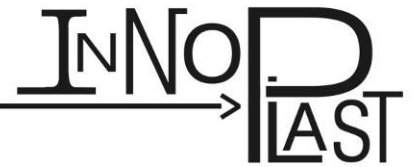
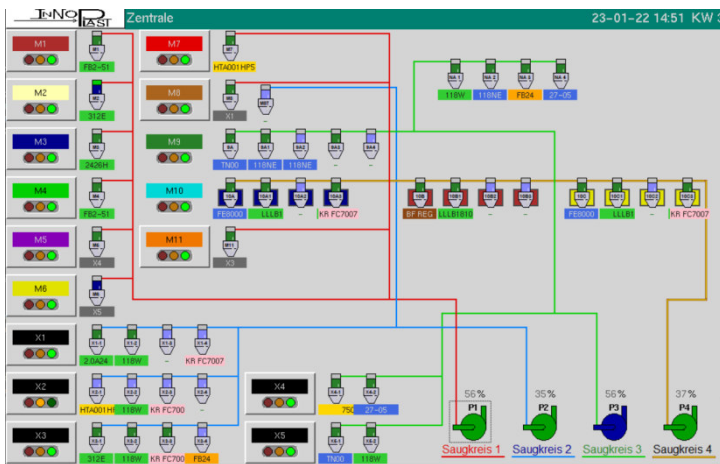


VIP Conveying and Feeding



Centralized feeding systems transport raw materials from silos and bag tasks via distribution stations directly to the separators of the gravimetric systems on the extruders. Optional safety valves avoid emptying and incorrect loading, thus residual quantities are avoided. The feeding can be operated directly on the machines and on centralized computers for material management.



The most efficient method of material feeding is a central feeding to all extrusion lines out of one silo storage, where all hopper loaders get their materials from and through metal pipes using vacuum. They can easily be operated at the user interface of the feeding computer, which controls the all of the hopper loaders and vacuum pump(s). Your benefit: the storage is centralized, the floor of the production hall is clean and the production is more lucid.

No matter if you have central feeding or a machine standalone solution, your operators can access all information of conveying state, material types and gravimetric recipe from all connected operator panels at any time.

The separators can be mounted directly on top of gravimetric weighing and dosing stations (GDS), or at mezzanine above the gravimetric.

Defin.	Reale	Defin.	Reale
Quantità prodotta	kg	10000.0	3212.6
Resid.			18:45
Consumo tot.	kg/h	360.0	362.2
Spes.tot.	my	80.1	59.6
P.m.l. tqt.	g/m	290.00	192.81
Larghezza	mm	1970	1758
Traino-V	m/min	20.69	31.31
Trattamento		spento	

bob. metri	5100
bob.	kg 739.5 * 2
Diam.	mm 740.6
Mandr.	mm 169.0

	Avv.1	Avv.2
Reale	m 112	84
bob.	kg 10.3	8.0
prec.	kg 627.6	628.9

Your benefits:

- Transparent and stable production process
- Easy operation at job change
- Reliable and priority controlled production
- Energy and resin waste saving concept
- Clean surrounding at the machines



Our mechanical components as separators and reservoirs are manufactured by our cooperation partner in Italian Veneto from AISI stainless steel. We offer equipment for feeding capacities up to a few thousands kg/h. All can be delivered including antistatic flexible pipes and suction nozzle.

Separators are equipped with a pneumatic self cleaning filter.

Our modern central filters work without expensive cartridges.

Combine your centralized feeding with our production management system webMIP: film recipes with the specified materials, densities and MFI will be processed at the production preparing office, orders will be assigned and transferred to the machines and feeding control panels.

Process variables and material consumption will be ready to help you analyzing and following your production process.

3007-100.005 - FCS47 / FCS47	63300 - 100.002 - FCS37 / FCS37	65760 - 100.120 - FCS200C / FCS200C	67760 - 100.008 - FCS37 / FCS37	685 - 100.007 - FCS25U / FCS25U	Q 196-131 - Lasko Q 196-131
190.009	190.002	190.120	190.008	190.007	
20940 kg	20940 kg	10770 kg - ca. 28 h	8230 kg - ca. 50 h	8120 kg - ca. 233 h	10080 kg
20940 kg	20940 kg	10480 kg - ca. 28 h	8200 kg - ca. 50 h	8120 kg - ca. 233 h	10080 kg
		377 kg/h	164 kg/h	35 kg/h	
Silo 13	Silo 14	Silo 15	Silo 16	Silo 20	Silo 21
PE (Medium-Density Linear) Ultrahigh Density	PE Linear Low Density	PE Low Density	PP	PE Very High Density	Masterbatch Colour
63300 - 100.120 - FCS200C / FCS200C	CAS - 100.011 - FCS30A	63300 - 100.011 - FCS30 / FCS300 / Q30-211	26 - 100.120 - FCS2000 / SP1100HP1 REF 180	685.008 - FCS108 F / A4000HP1100	BIANCO (MS) - MS Bianco
190.120	105.011	190.011	100.120	190.120	200.001
8330 kg - ca. 55 h	14200 kg - ca. 301 h	20740 kg - ca. 233 h	4200 kg - ca. 50 h	1040 kg - ca. 131 h	
8330 kg - ca. 55 h	14200 kg - ca. 301 h	20740 kg - ca. 233 h	4200 kg - ca. 50 h	1040 kg - ca. 131 h	
153 kg/h	48 kg/h	160 kg/h	28 kg/h	46 kg/h	48 kg/h
Silo 31	Silo 32	Silo 33	Silo 34	Silo 35	Silo 36

Accessories:

- sack emptying containers and bins, ready with purging valves
- mixer „Gravimix“ for central preparation of mixed recipes or basic blends
- alarm panel for multiple machines

What can we do for you? Get in touch today!

Inno-Plast GmbH
Mertensstr. 127-131
D-13587 Berlin

Tel. +49(30)3675 9580
Fax. +49(30)3675 9589
<http://www.inno-plast.de>
info@inno-plast.de

